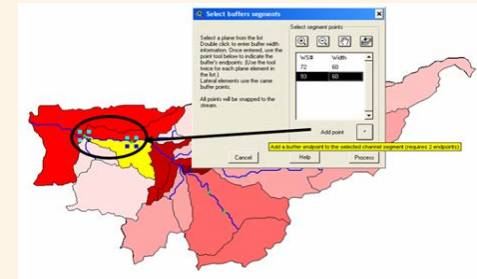
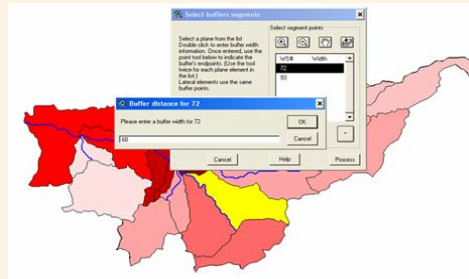
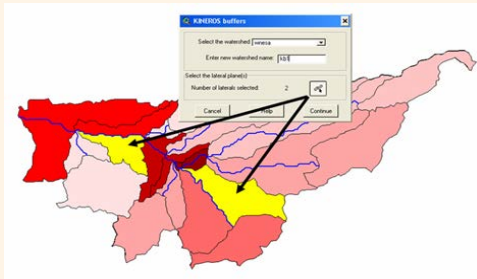


AGWA Management Tools

- | Land use and land cover modification
 - Based on common land use/vegetation types
 - Vegetation monitoring data
 - NRCS Ecological Site Descriptions
- | Riparian buffer strips
- | Detention and retention ponds/reservoirs
- | Multi-watershed analysis for political/park boundaries
- | Post-fire effects
- | Residential development

Evaluating the Effects of Riparian Buffers

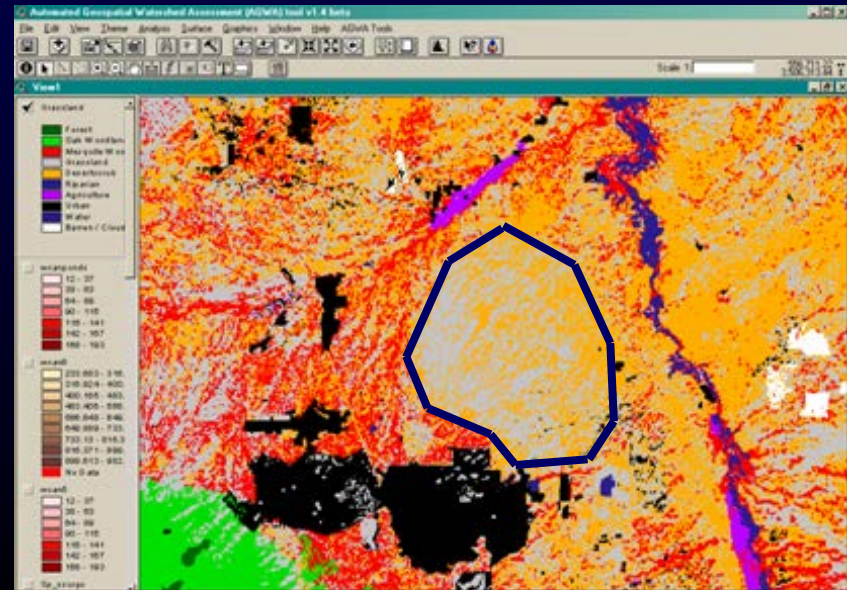
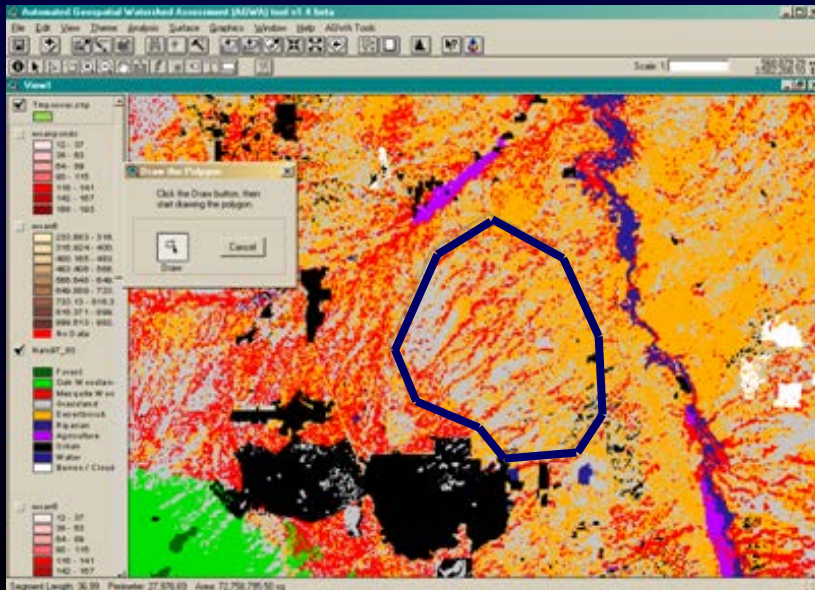
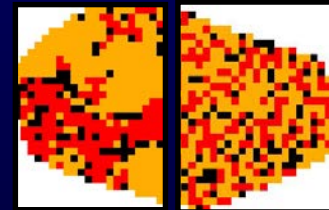
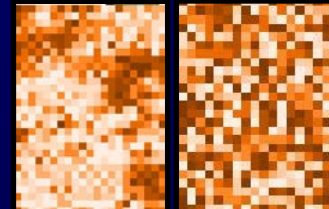
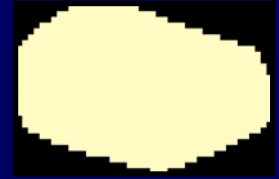


Land-Cover Modification Tool

Allows user to specify type and location of land-cover alterations by either drawing a polygon on the display, or specifying selected features from a polygon map (i.e. a pasture).

Types of Land-Cover Changes:

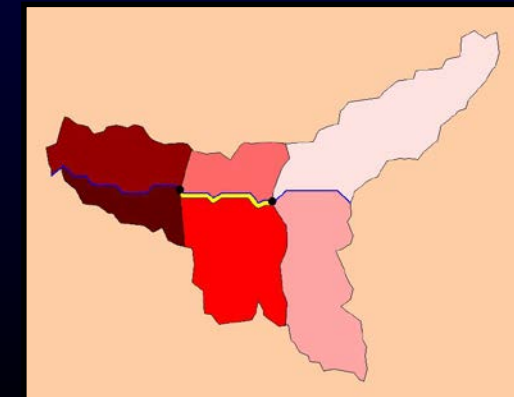
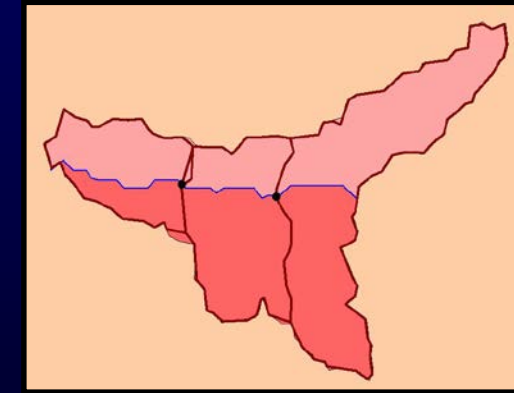
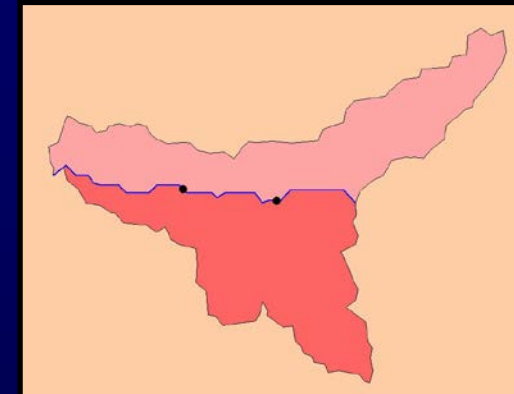
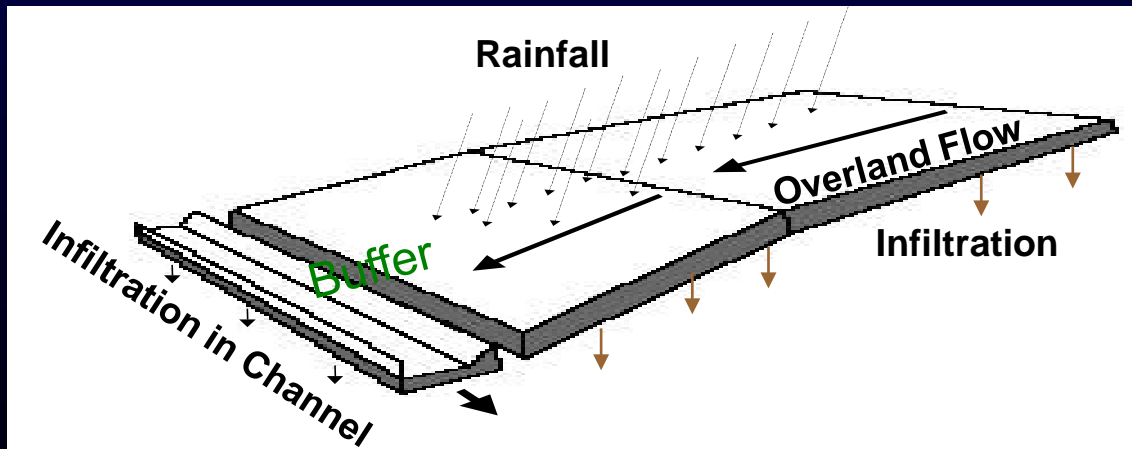
- Change entire user-defined area to new land cover (uniform)
- Change land-cover type to another (random or patchy/factal)
- Can specify % success of change due to practice (e.g. Shrub management, remove shrubs from hillslopes)



Management Tools Built into AGWA (Cont.)

Stream Buffer Tool

- User-defined geometry (length and width) for each buffer on the watershed
- Allows users to select a new landcover and slope for the buffer element
- Simulates the runoff / run-on process via interactive infiltration in KINEROS2)



Multi-point, Multi-watershed Analysis

- Designate multiple points of interest within a watershed for model output
 - Forces model to output hydrograph /sedigraph at that location
- Area of interest delineation, discretization, and model simulation
 - Automatically locates outlets for all watershed draining an area of interest
 - Attempts to cover the area with the fewest, and smallest, watersheds necessary
 - Discretizes the watersheds, parameterizes all model element and executes model

